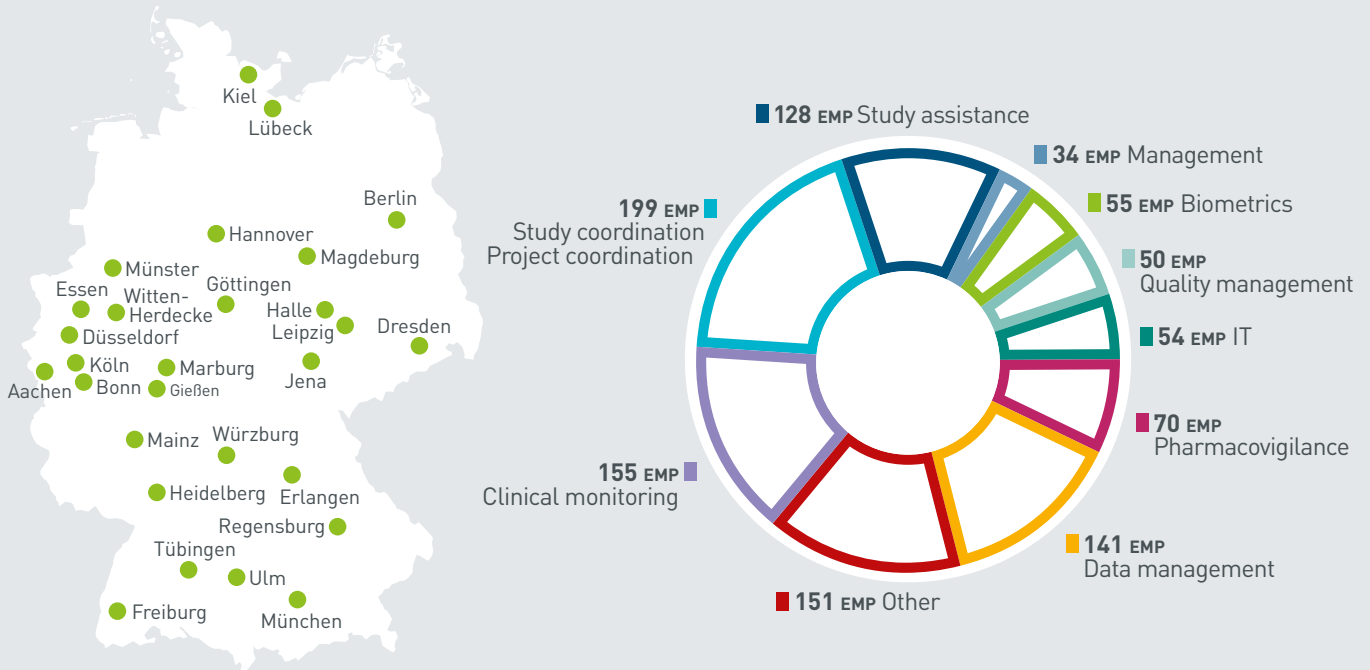
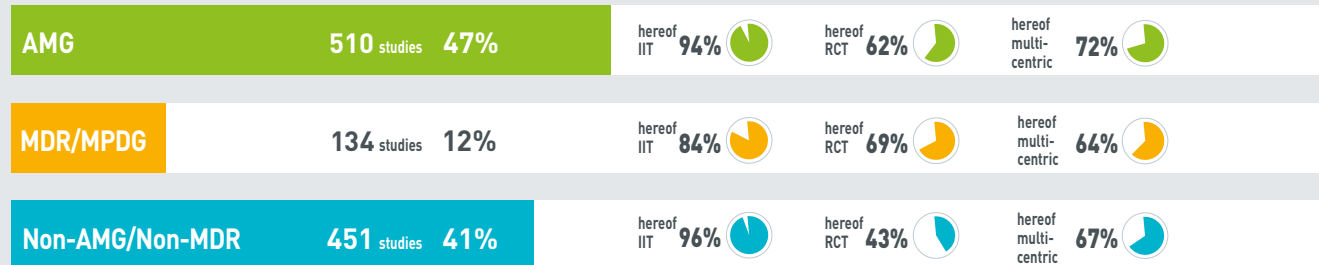


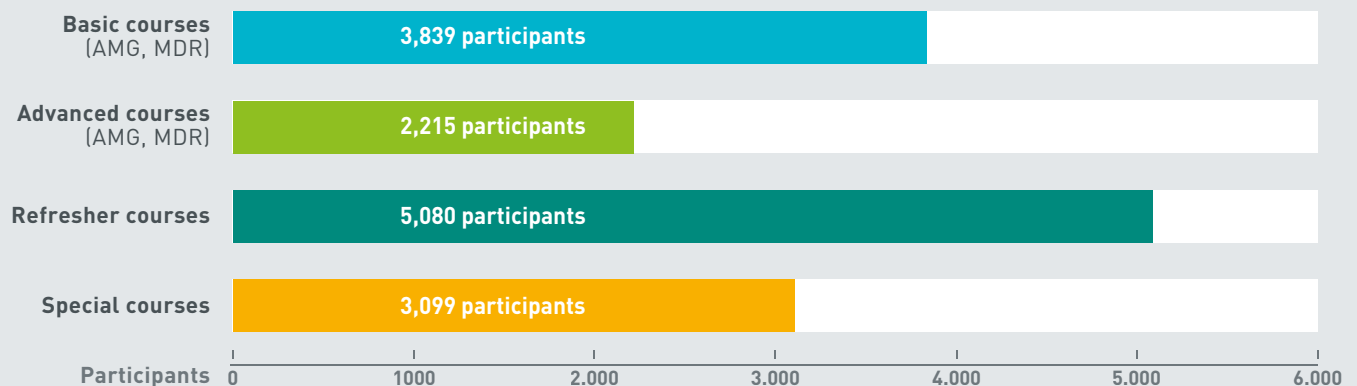
**KKS Network:** Cooperation of local competence hubs for quality-oriented clinical research with currently **27 members at academic institutions** and over **1,000 specialists** from relevant areas of expertise.



In 2022, members of the KKS Network were substantially\* involved in **1,095 clinical studies** and supported **67 registries** with currently more than **90,000 documented patients**.



In 2022, members of the KKS Network have supported **14,233 scientists** through courses addressing the quality compliant conduct of clinical studies.



**\*Substantial involvement:**  
Coverage of at least one of the core areas biometrics, project management, monitoring, SAE management or data management for the entire study, in case of multicentric testing for all centres.

**AMG:** German Medicines Act (Arzneimittelgesetz)  
**IIT:** Investigator-Initiated Trials  
**MDR:** Medical Device Regulation  
**MPDG:** German Medical Device Law Implementation Act  
**RCT:** Randomized Controlled Trials  
**EMP:** Employee

**KKS-Netzwerk e. V.**

Alt-Moabit 96 A  
10559 Berlin

+49 (0)30 3940 9677  
geschaeftsstelle@kks-netzwerk.de